



# Fall Programs at Reading Public Library 2019!

Check out all of the amazing events happening in the Children's Department All programs are FREE there is NO registration required.



**September is LIBRARY CARD SIGN-UP MONTH!**

*A library card brings stories to life!*



**GETTING A LIBRARY CARD IS EASY!**  
VISIT ANY RPL BRANCH WITH YOUR STATE ISSUED PA ID AND PROOF OF CURRENT ADDRESS

\*All accounts must be clear before we issue a new card. Only parents and legal guardians can make a card for a child.

**Slime Saturdays**  
@ 12:00 PM

September 14, November 9, December 7

The whole family can get messy and have a great time! A different slime each month!




**Comic Con 2019**  
New Dates, Times, and Events


- 10/5-10/10 Artist Alley
- 10/12-10/17 Gaming
- 10/19-10/26 Family Fun

## Fall Family Events


**Family Concert**  
Saturday, October 26th




**Family Night Photos**  
Monday, November 11th and 17th 4:30-6:30



**12 Days of Crafting**  
December 3rd-18th @ 4:00



**Holiday Party**  
Thursday, December 19th 3:30-5:00



For monthly calendars and more information on our daily programs and special events visit our website:

[readingpubliclibrary.org/children/](http://readingpubliclibrary.org/children/)

Follow us on Instagram



More on the back!



## Food For Thought Tuesdays at 4:00

Join us every Tuesday at 4:00 for  
discussion, books, and snacks.



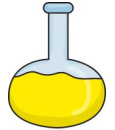
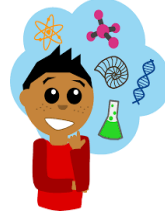
September 3, 10, 17, 24  
October 1, 8, 15, 22, 29  
November 12, 19, 26



## Science Lab

Thursdays at 4:00

September 5, 12, 19  
October 3, 10, 17, 24, 31  
November 7, 14, 21



## Crafts



Crafty Corner  
Wednesdays  
at 4:00



## Fun Fridays Fridays at 4:00

Each Friday is a different fun activity.  
Check the monthly calendar for more details.



100 S. 5th St. Reading, PA 19602  
[www.readingpubliclibrary.org](http://www.readingpubliclibrary.org)

Monday 9:30-7:00  
Tuesday 9:30—7:00  
Wednesday 9:30-7:00  
Thursday 9:30—5:30  
Friday 9:30— 5:30  
Saturday 9:30-3:00  
Questions?: Call 610.655.6350 Ext. 250  
E-mail: [rplmc@reading.lib.pa.us](mailto:rplmc@reading.lib.pa.us)

\*Children under the age of 9 must be  
accompanied by an adult over 18.

Drop in for:

- Daily Activities
- The Largest collection of children's books in the county
- Computers for early Learning and homework
- Dramatic play areas, blocks, coloring, and more!
- Friendly staff!